



## Polypharmacy in Heart Failure

As a patient with heart failure (HF), you may need to regularly take multiple medicines<sup>4</sup>



Studies show that most **older adults** (~90%) with HF have at least **3 other medical conditions**.<sup>5</sup>



HF patients often need to take **5 or more medicines**, termed 'polypharmacy'.<sup>6</sup>



### Tips for managing Polypharmacy:



1. Let your Doctor know **ALL** the medications you are taking for **ALL** your medical conditions.



2. Ask your Doctor / Pharmacist to develop a Best Possible Medication List (BPML) with the scheduled doses.

Ensure there will be no Drug-Drug / Drug-food interaction. Keep the list with you at all times.



3. Be mindful to take the right dose at the right time – follow your Doctor's instructions.



4. Utilize tools e.g. pill boxes with day indications or create a daily medication list with checkboxes.

Indicate with a tick after you take each medication.

**!** Inform your Doctor if you experience any side effects.



Reporting helps to improve the safety of medicines for all patients. This information help prescribers understand the risks and benefits of medicines to make better medicine choices with their patients<sup>7</sup>.

The advice provided should not replace that of Healthcare Professionals.

#### References:

- Butler J, Yang M, Manzi MA, Hess GP, Patel MJ, Rhodes T, Givertz MM. Clinical course of patients with worsening heart failure with reduced ejection fraction. *Journal of the American College of Cardiology*. 2019 Mar 5;73(8):935-44.
- Setoguchi S, Stevenson LW, Schneeweiss S. Repeated hospitalizations predict mortality in the community population with heart failure. *American heart journal*. 2007 Aug 1;154(2):260-6.
- Armstrong PW, Pleske B, Anstrom KJ, Ezekowitz J, Hernandez AF, Butler J, Lam CS, Ponikowski P, Voors AA, Jia G, McNulty SE. Vericiguat in patients with heart failure and reduced ejection fraction. *New England Journal of Medicine*. 2020 May 14;382(20):1883-93.
- Greene SJ, Mentz FJ, Felker GM. Outpatient worsening heart failure as a target for therapy: a review. *JAMA cardiology*. 2018 Mar 1;3(3):252-9.
- Malhotra C, Cheng Sim Wong G, Tan BC, Ng CS, Lee NC, Lau CS, Sim DK, Finkelstein EA. Living with heart failure: perspectives of patients from Singapore. *Proceedings of Singapore Healthcare*. 2016 Jun;25(2):92-7.
- Shah A, et al. Heart Failure: A Class Review of Pharmacotherapy. P&T: A peer-reviewed journal for formulary management. 2017;42(7):464-472.
- Health Hub. <https://healthhub.sg>. Accessed November 2021.
- Ozan Unlu. Polypharmacy in Older Adults Hospitalized for Heart Failure. *Circulation: Heart Failure*. 2020;13(11).
- Beazer J, Al Hatrushi M, Husband A, Kurdi A Forsyth P. Polypharmacy definition and prevalence in Heart Failure: a systematic review. *Heart Failure Rev*. 2021;1-28.
- Huang W, Lee SG, How CH. Management of the heart failure patient in the primary care setting. *Singapore medical journal*. 2020;61(5):225.

# LIVING WITH CHRONIC HEART FAILURE



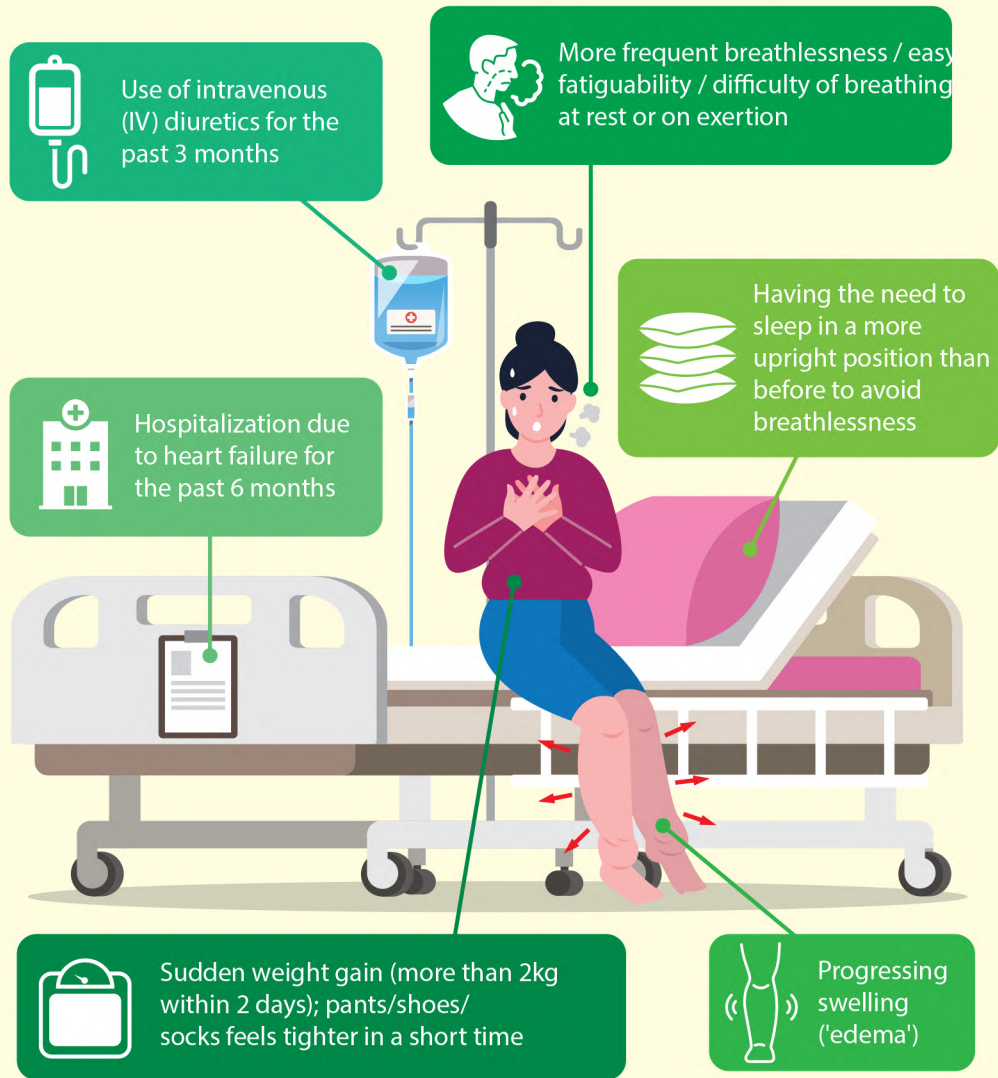
Brought to you by:




In partnership with:





What are the **possible signs** and **symptoms** of worsening of heart failure or decompensation?



 If you experience these symptoms, please consult your doctor for possible worsening of heart failure/decompensation.

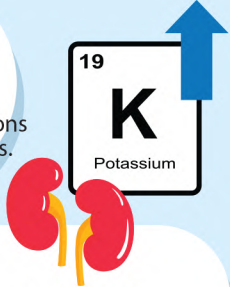
**Side effects** may occur from your **heart failure medications** or from **taking multiple medications** at the same time.

 Taking your medications is important as it helps to slow down the progression of Heart Failure. This will enable you to do the things you like and spend more time with your loved ones. Some of the most common side effects and how to manage them are as follows<sup>3</sup>:




**Hypotension, headache, or dizziness**

- Slowly get up from lying / sitting position.
- Consult your Doctor to review your medications and for possible use of compression stockings.



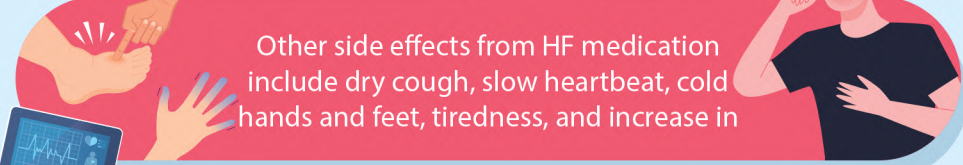
**Increase of potassium level**

- Avoid potassium rich food (e.g. banana, beans, lentils, potatoes) and avoid potassium supplements




**Nausea**

- Try to eat smaller meals throughout the day.
- Get some fresh air and keep your house ventilated.
- Avoid fried food where possible.
- Avoid lying down immediately after eating.
- Consult your Doctor on the best time to take your medications.



Other side effects from HF medication include dry cough, slow heartbeat, cold hands and feet, tiredness, and increase in

 Do not stop medication on your own & consult your doctor if you experience any side effects