



Excipient with known effect

Excipient with known effect

Initiation of treatment

Continuation of treatment

Missed dose

Elderly

Renal impairment

Hepatic impairment

Concomitant medication

Body weight

Paediatric population

Crushing of tablets

Initiation and continuation of treatment (see section 4.2)

Monitoring

Concomitant medications

Initiation of treatment

Continuation of treatment

Moderate and weak CYP3A4 inhibitors

Strong and moderate CYP3A4 inducers

Grapefruit

Kerendia contains lactose

Kerendia contains sodium

Strong CYP3A4 inhibitors

Strong and moderate CYP3A4 inducers

Certain medicinal products that increase serum potassium

Grapefruit

Moderate CYP3A4 inhibitors

Weak CYP3A4 inhibitors

Certain medicinal products that increase serum potassium (see section 4.4)

Antihypertensive medicinal products

Hyperkalaemia

Hyperkalaemia

Hypotension

Hyperuricaemia

Glomerular filtration rate (GFR) decreased

Haemoglobin decreased

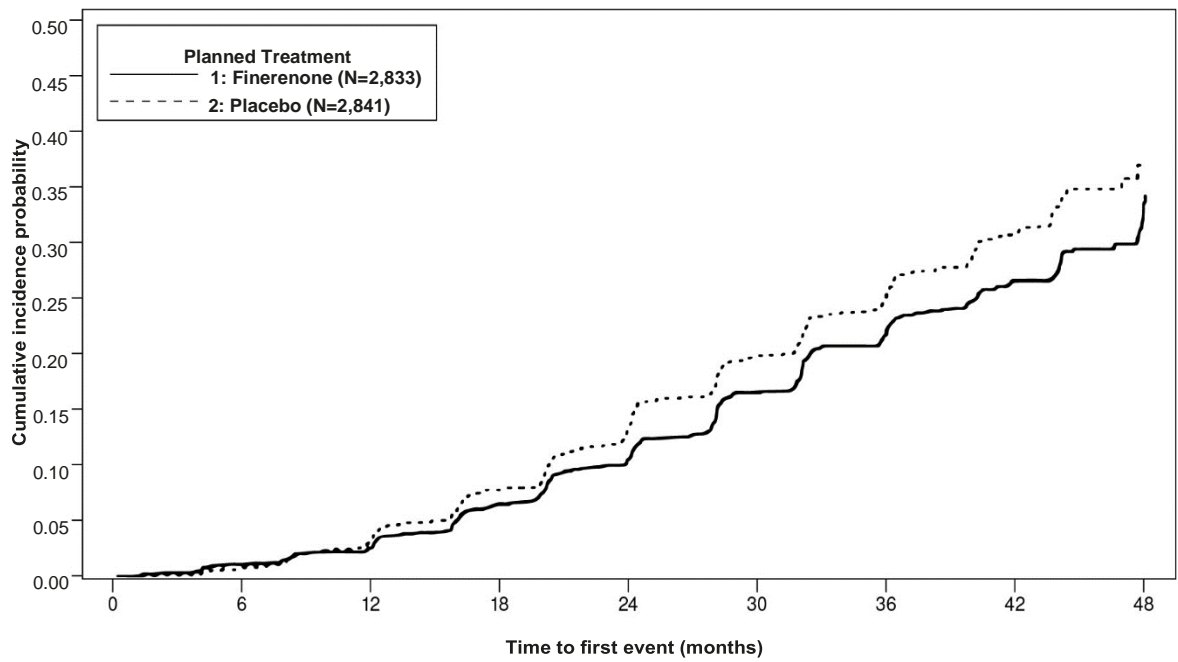


Cardiac electrophysiology

--	--	--	--

--	--	--	--

--	--	--	--

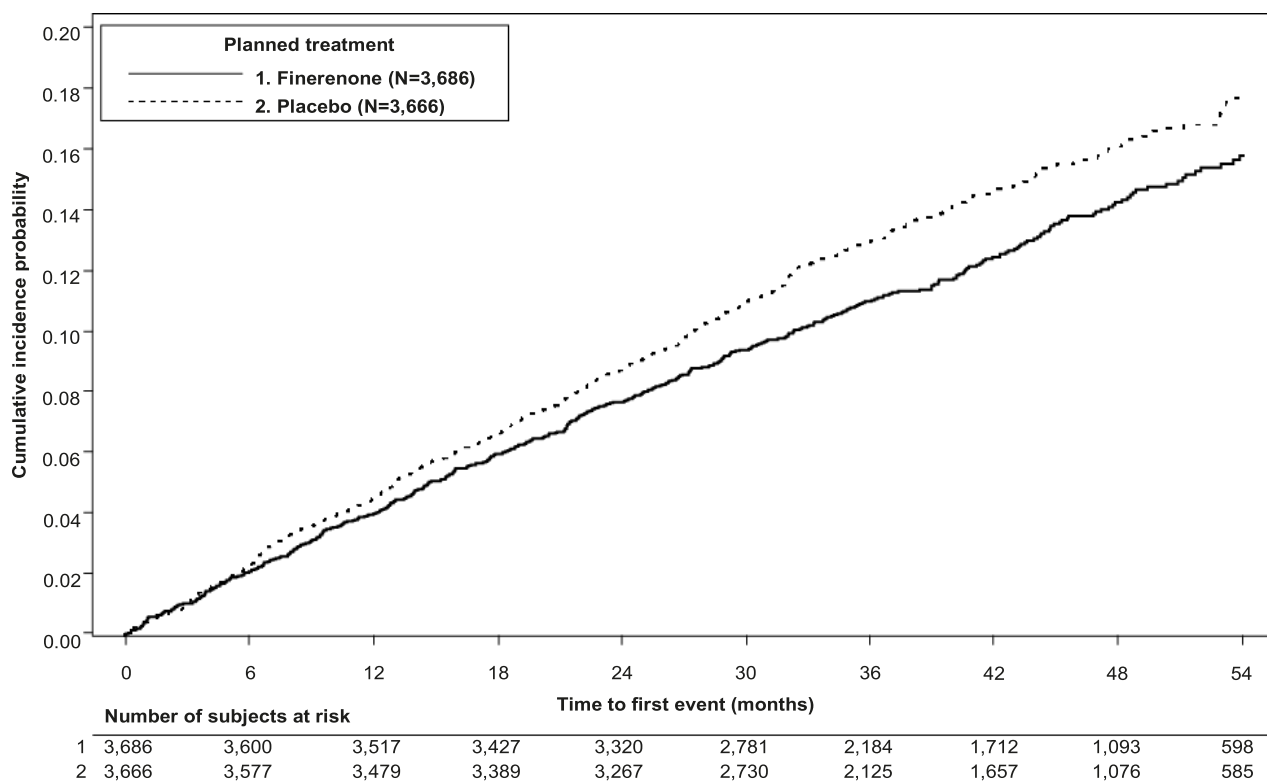


	Number of subjects at risk								
	0	6	12	18	24	30	36	42	48
1	2,833	2,705	2,607	2,397	1,808	1,274	787	441	83
2	2,841	2,724	2,586	2,379	1,759	1,248	792	453	82

--	--	--	--

--	--	--	--

--	--	--	--



in vivo *in vitro*

Effect of food

in vitro

Elderly

Renal impairment

Hepatic impairment

Body weight

In vivo

corpora lutea

Kerendia 10 mg film-coated tablets

Kerendia 20 mg film-coated tablets
