

## Wheat Diseases

### Timing of Disease Expression

Feekes 1 Emergence / Seedling	Feekes 2-3 Tillering (Dormancy - Winter Wheat)	Feekes 4-9 Stem Elongation / Jointing	Feekes 10 In Boot	Feekes 10.1-10.5 Heading / Flowering	Feekes 11.1-11.2 Milk / Dough Development	Feekes 11.3-11.4 Ripening / Maturity
Seedling blights and root rots						
Leaf rust, Yellow (Stripe) rust, Stem rust (typically occurs later in northern climates)						
Wheat spindle streak mosaic virus, Wheat streak mosaic virus						
Wheat soilborne mosaic virus						
Barley yellow dwarf virus						
Powdery mildew, Take-all disease, Septoria tritici blotch, Tan spot						
				Bacterial leaf blight, Bacterial leaf streak / Black chaff		
				Stagonospora nodorum blotch		
				Ergot, Loose smut, Fusarium head blight (scab)		
						Sooty head mold

#### Sources

Lee, C., Herbek, J. (editors), Bruening, W., et al. 2009. A comprehensive guide to wheat management in Kentucky. ID-125. University of Kentucky Extension. [www2.ca.uky.edu](http://www2.ca.uky.edu);

Schumann, G.L. and Leonard, K.J. 2011. Stem rust of wheat. The American Phytopathological Society;

Friskop, A. and Acevedo, M. 2015. Rust diseases of wheat in North Dakota. PP1361. North Dakota State University Extension;

McMullen, M. and Adhikari, T. 2009. Fungal leaf spot diseases of wheat: Tan spot, stagonospora nodorum blotch and septoria tritici blotch. PP1249. North Dakota State University Extension;

Duveiller, E., Fucikovsky, L. and Rudolph, K. (editors). 1997. The bacterial diseases of wheat: concepts and methods of disease management. Mexico, D.F.: CIMMYT;

Paulsen, G.M. et al. 1997. Wheat production handbook. C-529. Kansas State University Extension;

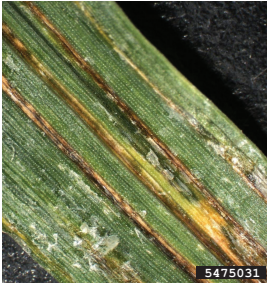
Burrows, M., Olmstead, J. and Grey, W. 2013. Fungal, bacterial, and physiological leaf diseases of cereal crops (wheat, durum, barley). Montana State University Extension;

Cowger, C. and Weisz, R. 2013. Chapter 12. Small grain disease management. Small grain production guide. North Carolina State University Extension;

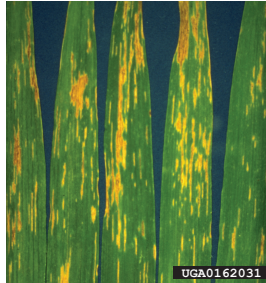
Hershman, D. 2011. Black "sooty" head mold of wheat. PPFS-AG-SG-07. University of Kentucky Extension;

Maloy, O.C. and Inglis, D.A. 1993. Ergot. Washington State University.

# Wheat Diseases



**Bacterial leaf blight**  
Mary Burrows, Montana State University, Bugwood.org



**Bacterial leaf streak**  
E.A. Milus, University of Arkansas, Bugwood.org



**Black chaff**  
Mary Burrows, Montana State University, Bugwood.org



**Tan spot**  
North Dakota State University, [www.ag.ndsu.edu/pubs/plantsci/smgrains/pp1552.pdf](http://www.ag.ndsu.edu/pubs/plantsci/smgrains/pp1552.pdf)



**Loose smut**  
Donald Groth, Louisiana State University AgCenter, Bugwood.org



**Wheat spindle streak mosaic virus**  
North Dakota State University, [www.ag.ndsu.edu/pubs/plantsci/smgrains/pp1552.pdf](http://www.ag.ndsu.edu/pubs/plantsci/smgrains/pp1552.pdf)



**Wheat streak mosaic virus**  
Mary Burrows, Montana State University, Bugwood.org



**Leaf rust**  
Louisiana State University Ag Center Archive, Louisiana State University AgCenter, Bugwood.org



**Yellow (Stripe) rust**  
Mary Burrows, Montana State University, Bugwood.org



**Stem rust**  
Mary Burrows, Montana State University, Bugwood.org



**Powdery mildew**  
Phil Sloderbeck, Kansas State University, Bugwood.org



**Take-all disease (aboveground)**  
William M. Brown Jr., Bugwood.org



**Take-all disease (roots)**  
Mary Burrows, Montana State University, Bugwood.org



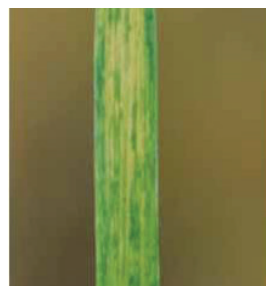
**Stagonospora nodorum blotch**  
North Dakota State University, [www.ag.ndsu.edu/pubs/plantsci/smgrains/pp1552.pdf](http://www.ag.ndsu.edu/pubs/plantsci/smgrains/pp1552.pdf)



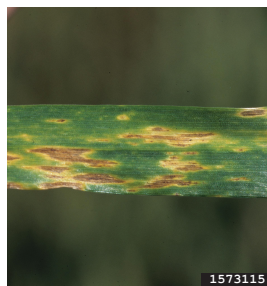
**Stagonospora nodorum blotch**  
North Dakota State University, [www.ag.ndsu.edu/pubs/plantsci/smgrains/pp1552.pdf](http://www.ag.ndsu.edu/pubs/plantsci/smgrains/pp1552.pdf)



**Barley yellow dwarf virus**  
Brian Olson, Oklahoma State University, Bugwood.org



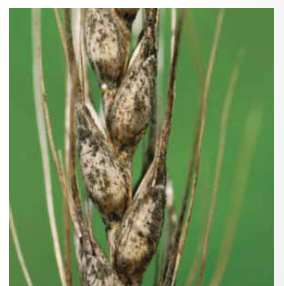
**Wheat soilborne mosaic virus**  
North Dakota State University, [www.ag.ndsu.edu/pubs/plantsci/smgrains/pp1552.pdf](http://www.ag.ndsu.edu/pubs/plantsci/smgrains/pp1552.pdf)



**Septoria tritici blotch**  
Gerald Holmes, California Polytechnic State University at San Luis Obispo, Bugwood.org



**Fusarium head blight (scab)**  
Mary Burrows, Montana State University, Bugwood.org



**Sooty head mold**  
North Dakota State University, [www.ag.ndsu.edu/pubs/plantsci/smgrains/pp1552.pdf](http://www.ag.ndsu.edu/pubs/plantsci/smgrains/pp1552.pdf)